

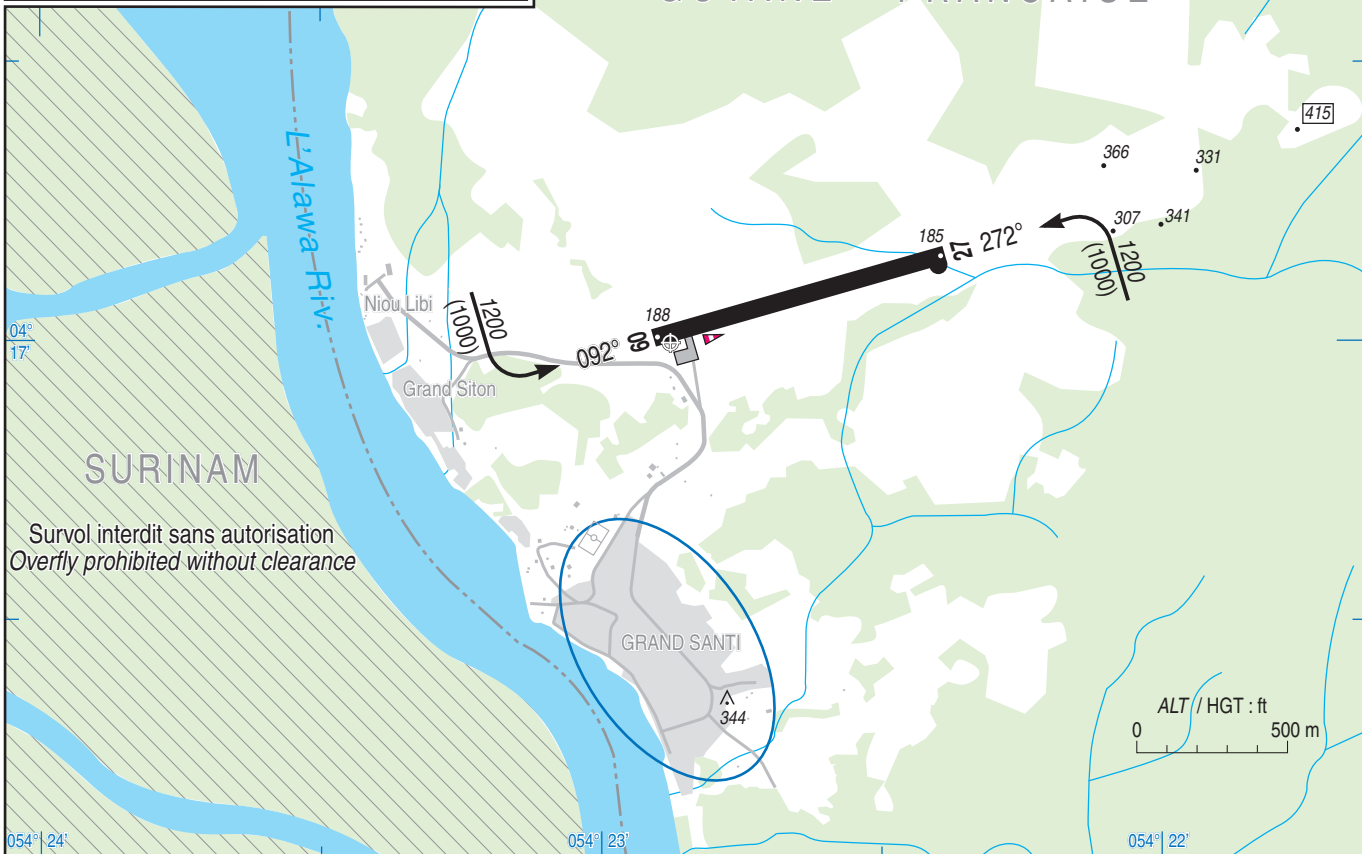
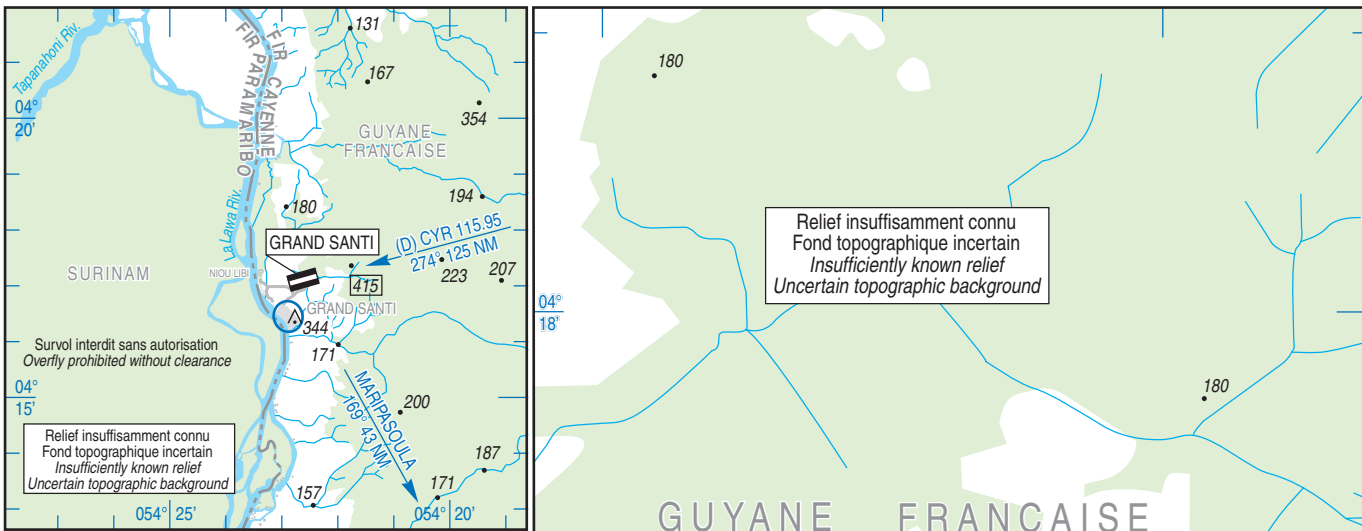
APPROCHE - ATERRISSAGE A VUE
Visual approach and landing

Usage restreint
Restricted use

GRAND SANTI

	ALT AD : 185 ft (7 hPa)	SOGS
	LAT : 04 17 00 N	Non WGS-84
	LONG : 054 22 52 W	VAR 18° W (15)

APP : NIL
TWR : NIL
A/A : 123.5



RWY	QFU	Dimensions Dimension	Nature Surface	Résistance Strength	TODA	ASDA	LDA
09	092	1000 x 18	Revêtu Paved	9 R/C/W/T	1000	1000	1000
27	272				1000	1000	1000

Aides lumineuses : NIL.

Lighting aids : NIL.