

**SOUTHEND
EGMC**

AD ELEV 55FT

ARP 513413N 0004136E

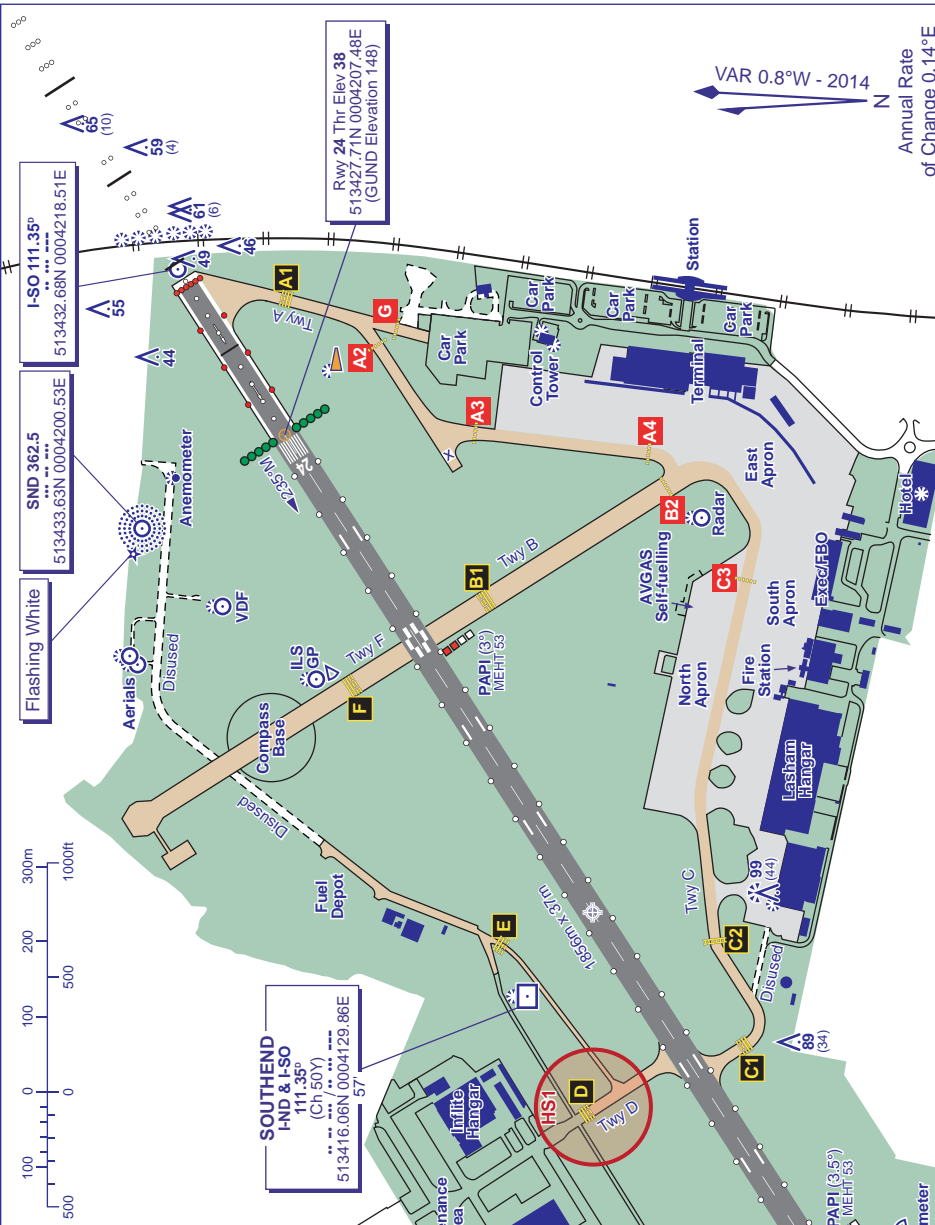
**AERODROME
CHART - ICAO**

COM	136.050	SOUTHEND INFORMATION
ATIS	127.725	SOUTHEND TOWER
TWR	121.600	SOUTHEND FIRE
LIGHTING		
THR 06/24		HI Green with W bars.
RWY 06		HI elev edge bi-d with omni-d component. HI C/L. End lights red. Red flush C/L beyond end of LDA/TORA.
RWY 24		HI Uni-directional C/L with four crossbars 583m. End lights red. Red pre-threshold edge.
TWYs		Green C/L from HP C3 to HP A1, and from RWY 06 to 90m east of HP C2. Elev blue edge on TWY A, B & C.

GUND (Geoid Undulation) =
The height of the Geoid (MSL) above the Reference Ellipsoid (WGS 84) at the stated position.

BEARINGS ARE MAGNETIC ELEVATIONS AND HEIGHTS ARE IN FEET	114 (59)
ELEVATIONS IN FEET AMSL	114 (59)

Hot Spot
HS1
North of Hold D, Taxiway D and the North West Maintenance Area are not part of the Manoeuvring Area; Potential conflict with airside vehicles operating without ATC clearance to access hangars via Taxiway D and a vehicle road located north of Holding Point D.



Annual Rate of Change 0.14°E

RUNWAY/TAXIWAY/APRON	SURFACE	BEARING STRENGTH	ELEVATION
RWY 06/24	Asphalt (BBA)	39/F/B/X/T	-
South Apron	Asphalt	26/F/B/X/T	37ft amsl
East Apron	Concrete	47/R/D/X/T	-
Taxiway A	Asphalt	47/F/D/X/T	-
Taxiways B, D, F & G	Asphalt	26/F/B/X/T	-
Taxiway C	Asphalt	26/F/B/X/U	-

AERO INFO DATE 30 SEP 14

CHANGE (13/14): COMPASS BASE ON TWY B REMOVED. OBSTACLES AMENDED.