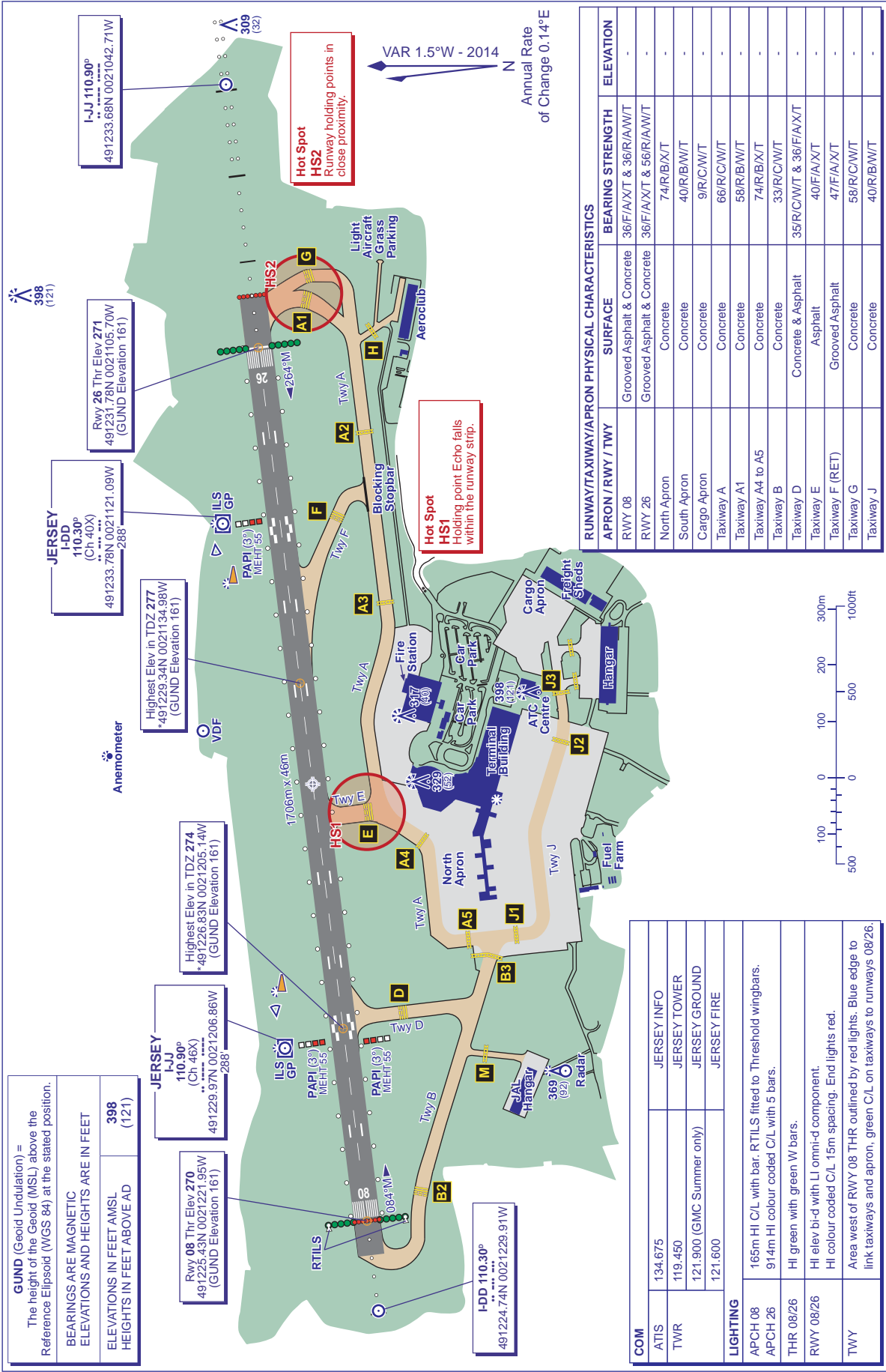


**JERSEY**  
EGJJ

AD ELEV 277FT

ARP 491229N 0021144W

**AERODROME**  
**CHART - ICAO**

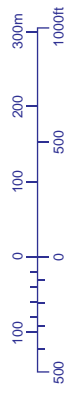


AERO INFO DATE 17 JUL 14

COM	TEXT
ATIS	134.675 JERSEY INFO
TWR	119.450 JERSEY TOWER
	121.900 (GMC Summer only) JERSEY GROUND
	121.600 JERSEY FIRE
<b>LIGHTING</b>	
APCH 08	165m HI C/L with bar. RTILS fitted to Threshold wingbars.
APCH 26	914m HI colour coded C/L with 5 bars.
THR 08/26	HI green with green W bars.
RWY 08/26	HI elev bi-d with LI omni-d component.
	HI colour coded C/L 15m spacing. End lights red.
TWY	Area west of RWY 08 THR outlined by red lights. Blue edge to link taxiways and apron, green C/L on taxiways to runways 08/26.

**CHANGE (11/14):** MAG VAR. RWY 09/27 REDESIGNATED 08/26.

APRON / RWY / TWY	SURFACE	BEARING STRENGTH	ELEVATION
RWY 08	Grooved Asphalt & Concrete	36/F/A/X/T & 36/R/A/W/T	-
RWY 26	Grooved Asphalt & Concrete	36/F/A/X/T & 56/R/A/W/T	-
North Apron	Concrete	74/R/B/X/T	-
South Apron	Concrete	40/R/B/W/T	-
Cargo Apron	Concrete	9/R/C/W/T	-
Taxiway A	Concrete	66/R/C/W/T	-
Taxiway A1	Concrete	58/R/B/W/T	-
Taxiway A4 to A5	Concrete	74/R/B/X/T	-
Taxiway B	Concrete	33/R/C/W/T	-
Taxiway D	Concrete & Asphalt	35/R/C/W/T & 36/F/A/X/T	-
Taxiway E	Asphalt	40/F/A/X/T	-
Taxiway F (RET)	Grooved Asphalt	47/F/A/X/T	-
Taxiway G	Concrete	58/R/C/W/T	-
Taxiway J	Concrete	40/R/B/W/T	-



VAR 1.5°W - 2014  
Annual Rate of Change 0.14°E

**Hot Spot HS2**  
Runway holding points in close proximity.

**Hot Spot HS1**  
Holding point Echo falls within the runway strip.

**GUND** (Geoid Undulation) = The height of the Geoid (MSL) above the Reference Ellipsoid (WGS 84) at the stated position.  
**BEARINGS ARE MAGNETIC ELEVATIONS AND HEIGHTS ARE IN FEET**  
**ELEVATIONS IN FEET AMSL** 398 (121)  
**HEIGHTS IN FEET ABOVE AD**

**JERSEY I-JJ 110.30° (Ch. 46X)**  
491229.97N 0021206.86W  
288

**Highest Elev in TDZ 274**  
\*491226.83N 0021205.14W  
(GUND Elevation 161)

**Highest Elev in TDZ 277**  
\*491229.34N 0021134.98W  
(GUND Elevation 161)

**Rwy 26 Thr Elev 271**  
491231.78N 0021105.70W  
(GUND Elevation 161)

**I-JJ 110.30°**  
491233.68N 0021042.71W