

AERODROME CHART

TORONTO/DOWNSVIEW
TORONTO ON

UNICOM
126.2 (MF 3 NM)
O/T TFC 126.2

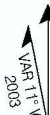
DEP
TORONTO CTR
133.4 363.8

DECLARED DISTANCES

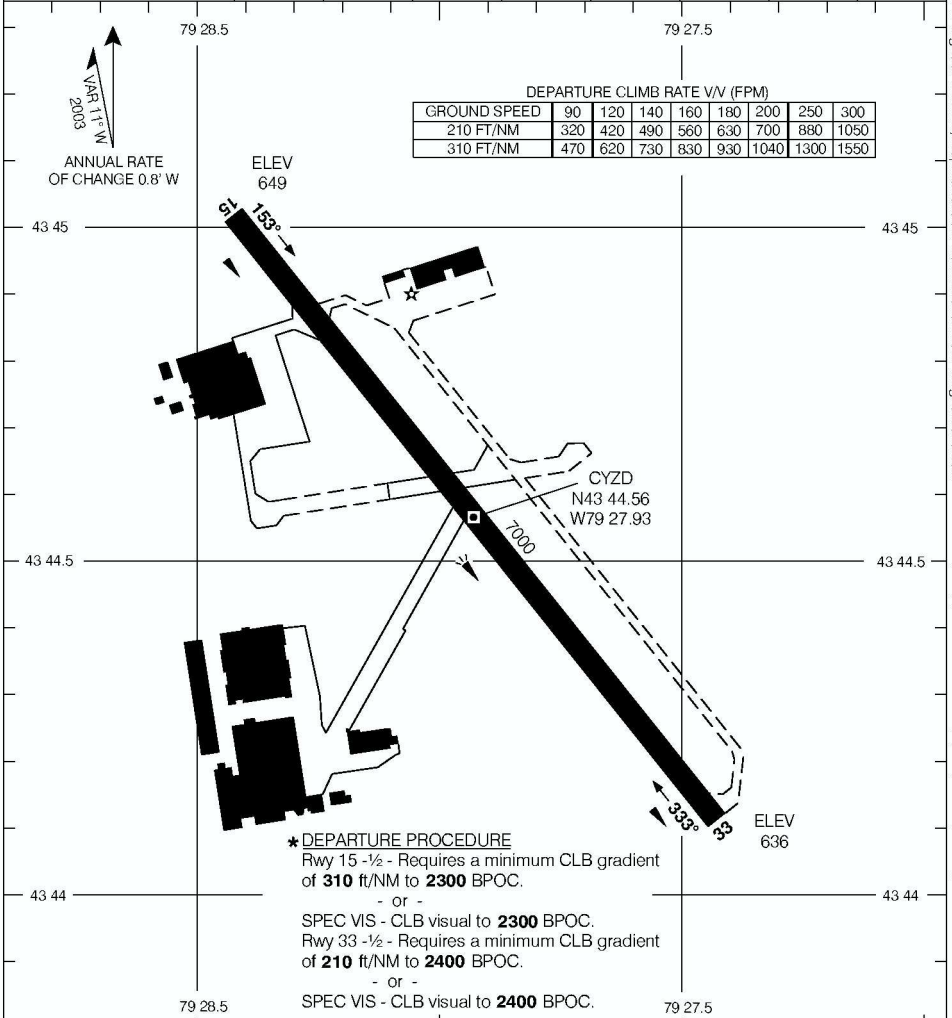
	15	33					
TORA	7000	7000					
TODA	7800	8000					
ASDA	7000	7000					
LDA	7000	7000					

DEPARTURE CLIMB RATE V/V (FPM)

GROUND SPEED	90	120	140	160	180	200	250	300
210 FT/NM	320	420	490	560	630	700	880	1050
310 FT/NM	470	620	730	830	930	1040	1300	1550



ANNUAL RATE
OF CHANGE 0.8' W



* DEPARTURE PROCEDURE

Rwy 15 -½ - Requires a minimum CLB gradient of **310 ft/NM to 2300 BPOC.**

- or -

SPEC VIS - CLB visual to **2300 BPOC.**

Rwy 33 -½ - Requires a minimum CLB gradient of **210 ft/NM to 2400 BPOC.**

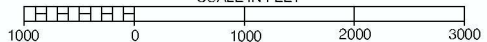
- or -

SPEC VIS - CLB visual to **2400 BPOC.**

TAKE-OFF MINIMA

Rwys 15, 33 : *

SCALE IN FEET



AERODROME CHART

EFF 15 MAR 07

CHANGE: Comm box

CHANGE: Comm box; AGCC coord

TORONTO ON
TORONTO/DOWNSVIEW

NAD83