

# AERODROME CHART

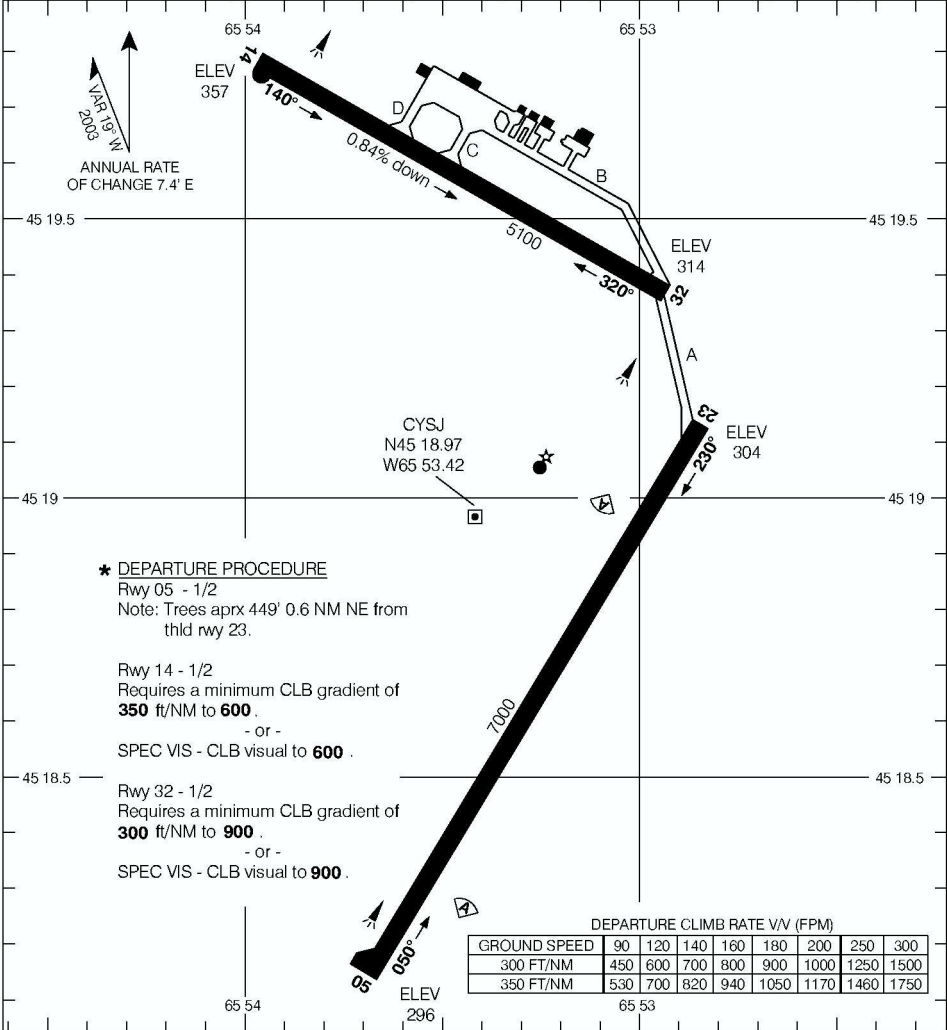
SAINT JOHN NEW BRUNSWICK  
SAINT JOHN NB

**RADIO**  
118.5 (MF 5 NM)  
236.6

**DEP**  
MONCTON CTR  
124.3 270.8

**DECLARED DISTANCES**

	05	23	14	32				
TORA	7000	7000	5100	5100				
TODA	8000	8000	6100	6100				
ASDA	7000	7000	5100	5100				
LDA	7000	7000	5100	5100				



**\* DEPARTURE PROCEDURE**  
 Rwy 05 - 1/2  
 Note: Trees aprx 449' 0.6 NM NE from thid rwy 23.

Rwy 14 - 1/2  
 Requires a minimum CLB gradient of **350 ft/NM to 600**.  
 - or -  
 SPEC VIS - CLB visual to **600**.

Rwy 32 - 1/2  
 Requires a minimum CLB gradient of **300 ft/NM to 900**.  
 - or -  
 SPEC VIS - CLB visual to **900**.

DEPARTURE CLIMB RATE V/V (FPM)

GROUND SPEED	90	120	140	160	180	200	250	300
300 FT/NM	450	600	700	800	900	1000	1250	1500
350 FT/NM	530	700	820	940	1050	1170	1460	1750

**TAKE-OFF MINIMA**

Rwys 05, 14, 32: \*  
 Rwy 23: 1/2



AERODROME CHART  
EFF 15 MAR 07

CHANGE: Revised

SAINT JOHN NB  
SAINT JOHN NEW BRUNSWICK  
NAD83

© 2007 Her Majesty The Queen In Right of Canada, Department of Natural Resources All rights reserved. Source of Canadian Civil Aeronautical Data © 2007 NAV CANADA All rights reserved.