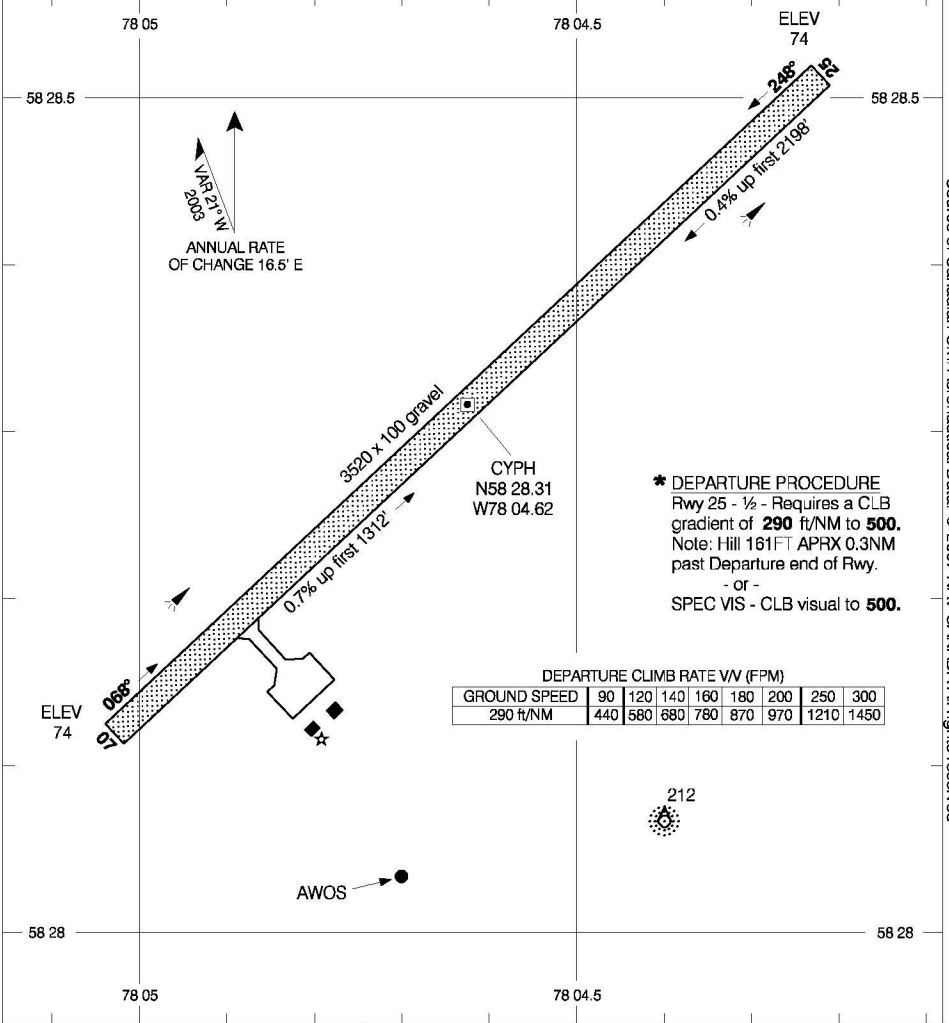


AERODROME CHART

INUKJUAK
INUKJUAK QC

AWOS 125.3 (Eng) 122.55 (Fr)	APRT RADIO 122.1 (MF 5 NM) O/T TFC 122.1	RADIO (DRCO) QUEBEC 126.7
---	---	--

DECLARED DISTANCES	07	25						
	TORA	3520	3520					
TODA	3520	3520						
ASDA	3520	3520						
LDA	3520	3520						



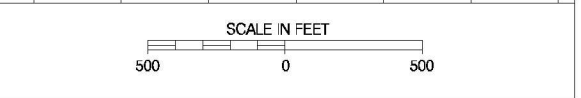
*** DEPARTURE PROCEDURE**
 Rwy 25 - 1/2 - Requires a CLB gradient of **290 ft/NM to 500**.
 Note: Hill 161 FT APRX 0.3NM past Departure end of Rwy.
 - or -
 SPEC VIS - CLB visual to **500**.

DEPARTURE CLIMB RATE V/V (FPM)

GROUND SPEED	90	120	140	160	180	200	250	300
290 ft/NM	440	580	680	780	870	970	1210	1450

TAKE-OFF MINIMA

Rwy 07: 1/2
Rwy 25: *



AERODROME CHART

EFF 5 JUL 07

CHANGE: Editorial

INUKJUAK QC
INUKJUAK
NAD83

Source of Canadian Civil Aeronautical Data: © 2007 NAV CANADA All rights reserved