

# AERODROME CHART

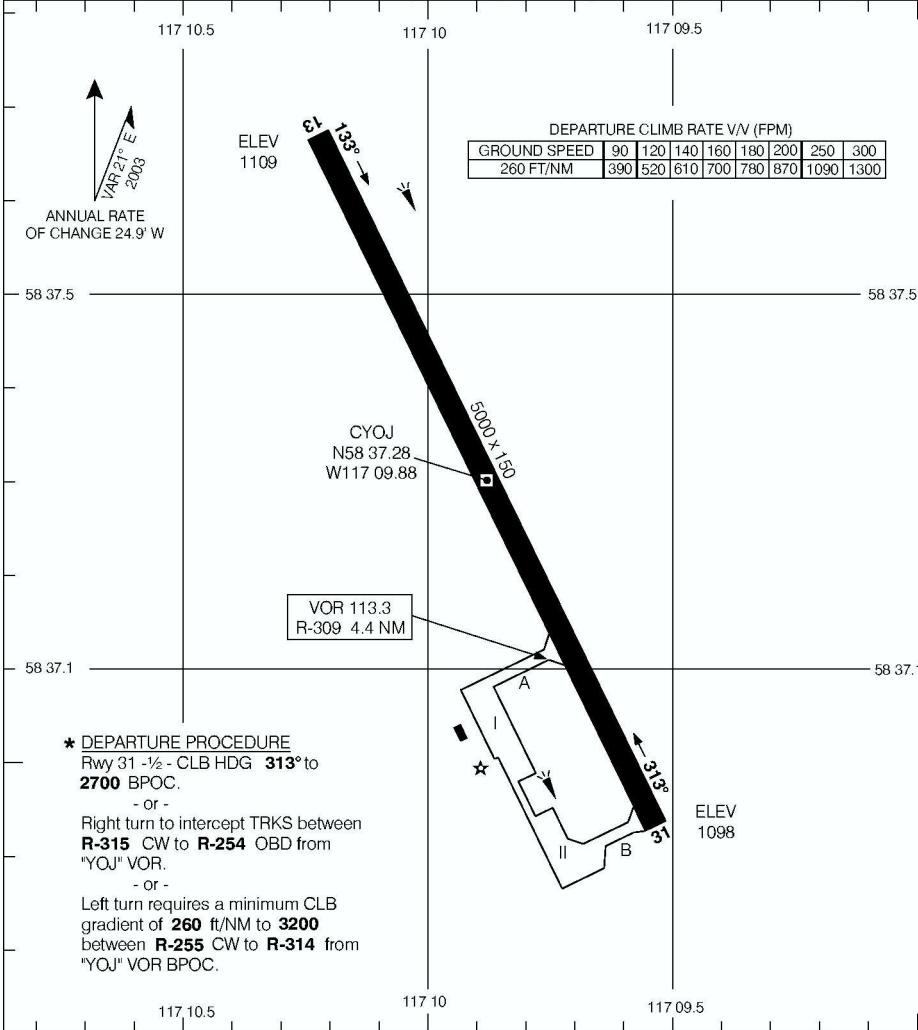
HIGH LEVEL  
HIGH LEVEL AB

**RADIO**  
123.25 (MF 5 NM)

**DEP**  
**EDMONTON CENTRE**  
123.7 135.1

**DECLARED DISTANCES**

	13	31						
TORA	5000	5000						
TODA	5894	5984						
ASDA	5000	5000						
LDA	5000	5000						



**\* DEPARTURE PROCEDURE**  
Rwy 31 -½ - CLB HDG **313°** to **2700** BPOC.  
- or -  
Right turn to intercept TRKS between **R-315** CW to **R-254** OBD from "YOJ" VOR.  
- or -  
Left turn requires a minimum CLB gradient of **260** ft/NM to **3200** between **R-255** CW to **R-314** from "YOJ" VOR BPOC.

# AERODROME CHART

EFF 23 NOV 06

CHANGE: TODA

HIGH LEVEL AB  
HIGH LEVEL

NAD83

© 2006 Her Majesty The Queen In Right of Canada, Department of Natural Resources All rights reserved. Source of Canadian Civil Aeronautical Data: © 2006 NAV CANADA All rights reserved.