

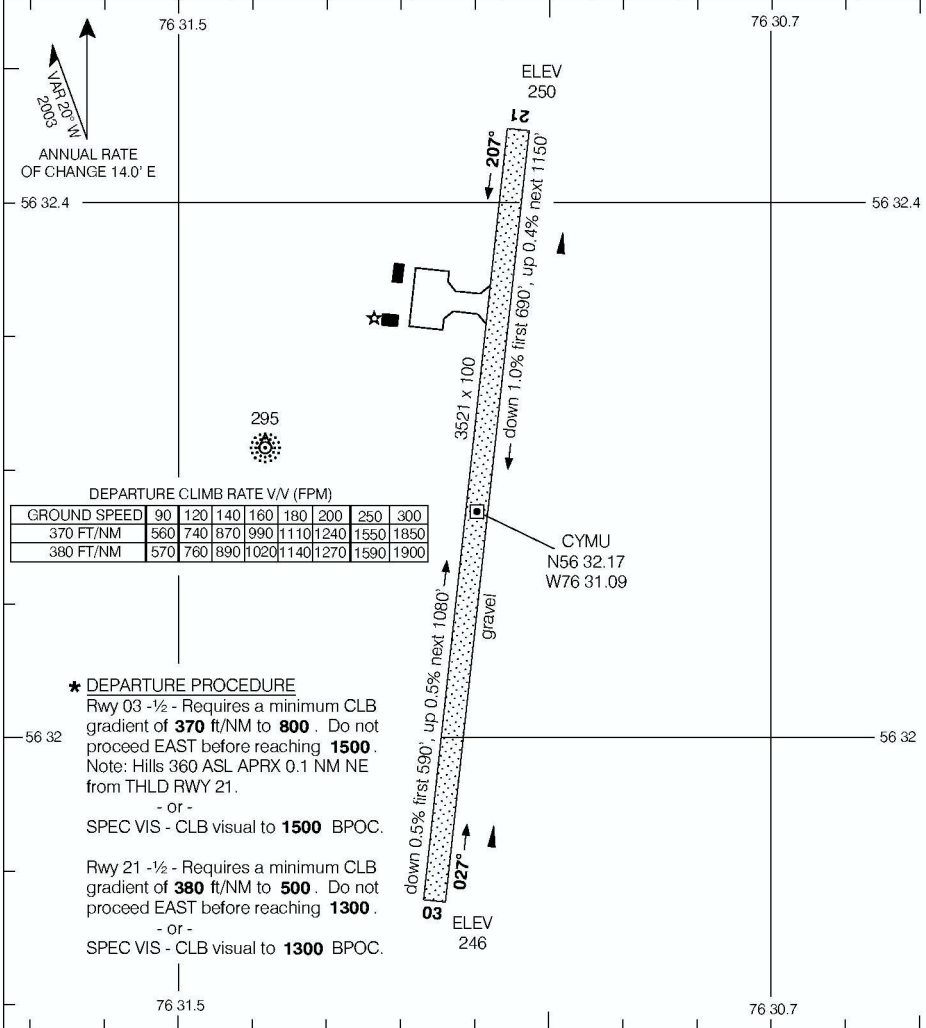
AERODROME CHART

UMIUJAQ
UMIUJAQ QC

APRT RADIO
122.1 (MF 5 NM)
O/T TFC 122.1

DECLARED DISTANCES

	03	21						
TORA	3521	3521						
TODA	3521	3521						
ASDA	3521	3521						
LDA	3521	3521						



DEPARTURE CLIMB RATE V/V (FPM)

GROUND SPEED	90	120	140	160	180	200	250	300
370 FT/NM	560	740	870	990	1110	1240	1550	1850
380 FT/NM	570	760	890	1020	1140	1270	1590	1900

* DEPARTURE PROCEDURE

Rwy 03 -½ - Requires a minimum CLB gradient of **370 ft/NM** to **800**. Do not proceed EAST before reaching **1500**. Note: Hills 360 ASL APRX 0.1 NM NE from THLD RWY 21.

- or -

SPEC VIS - CLB visual to **1500** BPOC.

Rwy 21 -½ - Requires a minimum CLB gradient of **380 ft/NM** to **500**. Do not proceed EAST before reaching **1300**.

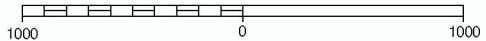
- or -

SPEC VIS - CLB visual to **1300** BPOC.

TAKE-OFF MINIMA

Rwys 03, 21: *

SCALE IN FEET



AERODROME CHART
EFF 8 JUN 06

CHANGE: Editorial

UMIUJAQ QC
UMIUJAQ
NAD83

© 2006 Her Majesty The Queen In Right of Canada, Department of Natural Resources All rights reserved. Source of Canadian Civil Aeronautical Data: © 2006 NAV CANADA All rights reserved.