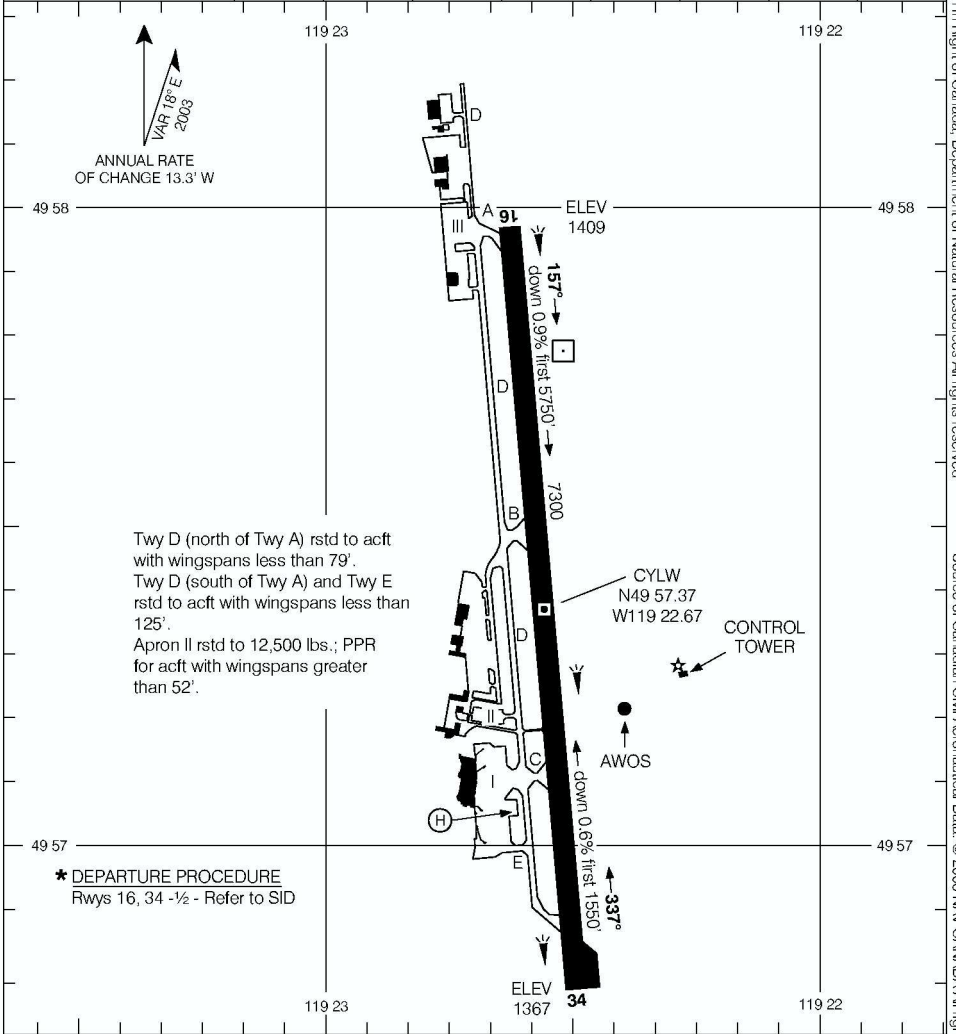


AERODROME CHART

KELOWNA
KELOWNA BC

VOT 114.8	ATIS 127.5	GND 121.7	TWR 119.6 292.2 O/T PENTICTON RADIO 119.6 (MF 5 NM)	DEP VANCOUVER CENTRE 133.5 294.0
---------------------	----------------------	---------------------	------------------------------------------------------------------	-----------------------------------------------

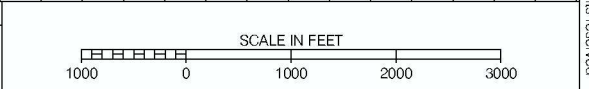
DECLARED DISTANCES	16	34					
	TORA	7300	7300				
TODA	8300	8300					
ASDA	7300	7300					
LDA	7300	7300					



Twy D (north of Twy A) rstd to acft with wingspans less than 79'.
Twy D (south of Twy A) and Twy E rstd to acft with wingspans less than 125'.
Apron II rstd to 12,500 lbs.; PPR for acft with wingspans greater than 52'.

* DEPARTURE PROCEDURE
Rwys 16, 34 - 1/2 - Refer to SID

TAKE-OFF MINIMA
Rwys 16; 34: *



AERODROME CHART
EFF 23 NOV 06

CHANGE: Rwy gradient; twy note

KELOWNA BC
KELOWNA
NAD83

© 2006 Her Majesty The Queen in Right of Canada, Department of Natural Resources. All rights reserved. Source of Canadian Civil Aeronautical Data: © 2006 NAV CANADA. All rights reserved.