

AERODROME CHART (DND)

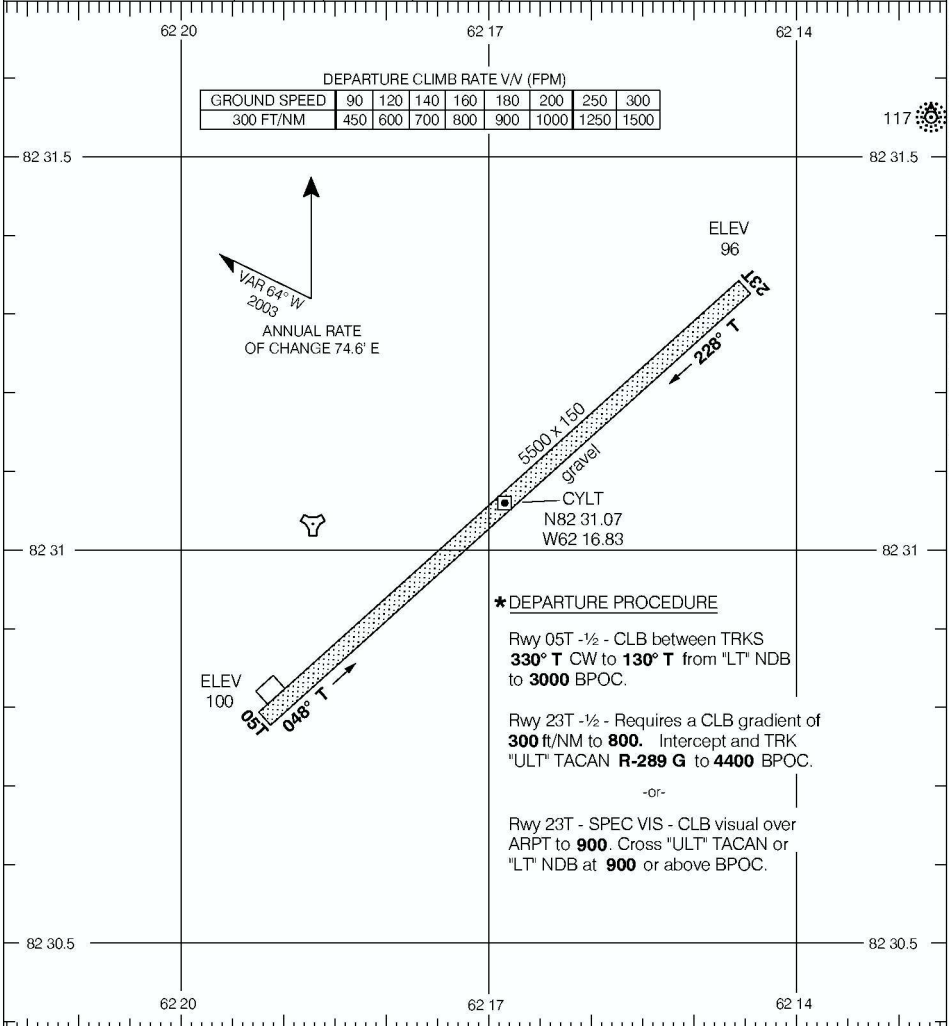
ALERT
ALERT NU

**No control. Contact ALERT RADIO on 5680 or 126.7
(available on 3 hrs notice from RESOLUTE or THULE)
within 15 mins of ETA and prior to descent. Report intentions.**

© 2006 Her Majesty The Queen In Right of Canada, Department of Natural Resources All rights reserved

DECLARED DISTANCES	05T	23T						
TORA	5500	5500						
TODA	5500	5500						
ASDA	5500	5500						
LDA	5500	5500						

DEPARTURE CLIMB RATE V/V (FPM)								
GROUND SPEED	90	120	140	160	180	200	250	300
300 FT/NM	450	600	700	800	900	1000	1250	1500



***DEPARTURE PROCEDURE**

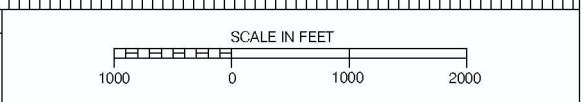
Rwy 05T -½ - CLB between TRKS
330° T CW to 130° T from "LT" NDB
to **3000 BPOC**.

Rwy 23T -½ - Requires a CLB gradient of
300 ft/NM to 800. Intercept and TRK
"ULT" TACAN **R-289 G** to **4400 BPOC**.

-0r-

Rwy 23T - SPEC VIS - CLB visual over
ARPT to **900**. Cross "ULT" TACAN or
"LT" NDB at **900** or above BPOC.

TAKE-OFF MINIMA
Rwys 05T, 23T: *



AERODROME CHART (DND)
EFF 13 APR 06

CHANGE: Editorial

ALERT NU
ALERT