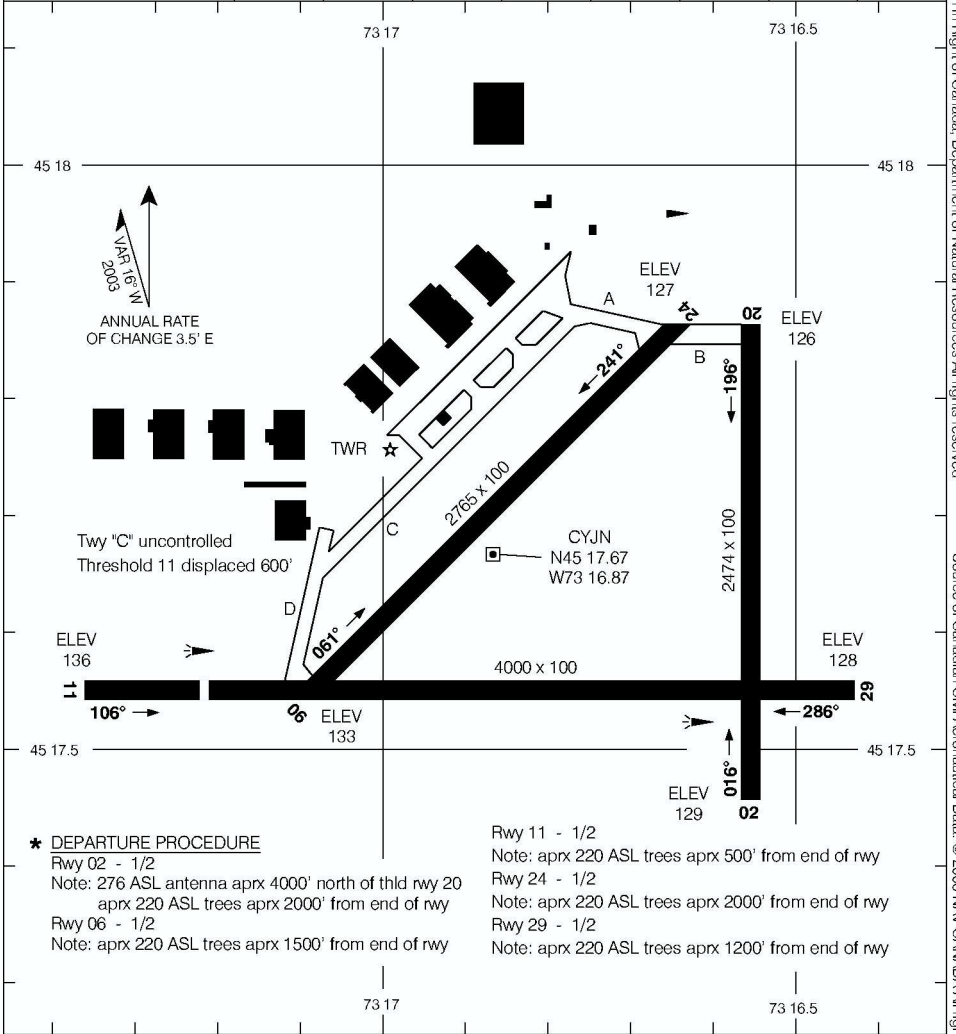


AERODROME CHART

ST-JEAN
ST-JEAN QC

QND 121.7	QTR 118.2 356.8 O/T TFC 118.2 (ATF 5 NM)		DEP MONTREAL 125.15 268.3	
---------------------	---	--	---	--

DECLARED DISTANCES	02	20	06	24	11	29
TORA	2474	2474	2765	2765	4000	4000
TODA	3124	3474	3765	3765	4250	4270
ASDA	2474	2474	2765	2765	4000	4000
LDA	2474	2474	2765	2765	3400	4000



*** DEPARTURE PROCEDURE**
 Rwy 02 - 1/2
 Note: 276 ASL antenna aprx 4000' north of thld rwy 20
 aprx 220 ASL trees aprx 2000' from end of rwy
 Rwy 06 - 1/2
 Note: aprx 220 ASL trees aprx 1500' from end of rwy

Rwy 11 - 1/2
 Note: aprx 220 ASL trees aprx 500' from end of rwy
 Rwy 24 - 1/2
 Note: aprx 220 ASL trees aprx 2000' from end of rwy
 Rwy 29 - 1/2
 Note: aprx 220 ASL trees aprx 1200' from end of rwy

TAKE-OFF MINIMA	SCALE IN FEET
Rwys 02, 06, 11, 20, 24, 29 *	

© 2006 Her Majesty The Queen In Right of Canada, Department of Natural Resources All rights reserved. Source of Canadian Civil Aeronautical Data: © 2006 NAV CANADA All rights reserved.