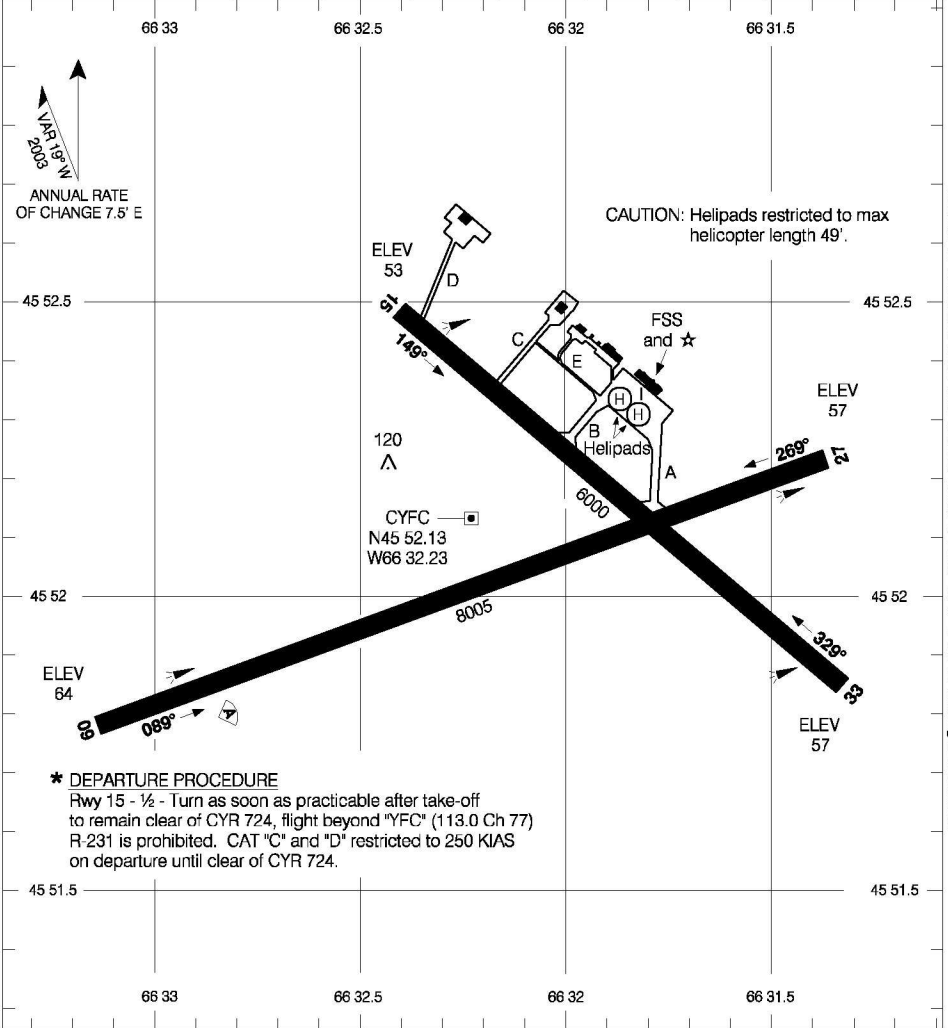


AERODROME CHART

FREDERICTON INTL
FREDERICTON NB

ATIS 127.55	RADIO 119.0 (MF 5 NM) 236.6	DEP MONCTON CENTRE 124.3 270.8
-----------------------	--	--

DECLARED DISTANCES	09	27	15	33
	TORA	8005	8005	6000
TODA	8405	9005	7000	7000
ASDA	8005	8005	6000	6000
LDA	8005	8005	6000	6000



Source of Canadian Civil Aeronautical Data: © 2007 NAV CANADA All rights reserved

*** DEPARTURE PROCEDURE**

Rwy 15 - ½ - Turn as soon as practicable after take-off to remain clear of CYR 724, flight beyond "YFC" (113.0 Ch 77) R-231 is prohibited. CAT "C" and "D" restricted to 250 KIAS on departure until clear of CYR 724.

TAKE-OFF MINIMA

Rwys 09, 27, 33: ½
Rwy 15: *



AERODROME CHART
EFF 5 JUL 07

CHANGE: A/D name

FREDERICTON NB
FREDERICTON INTL
NAD83