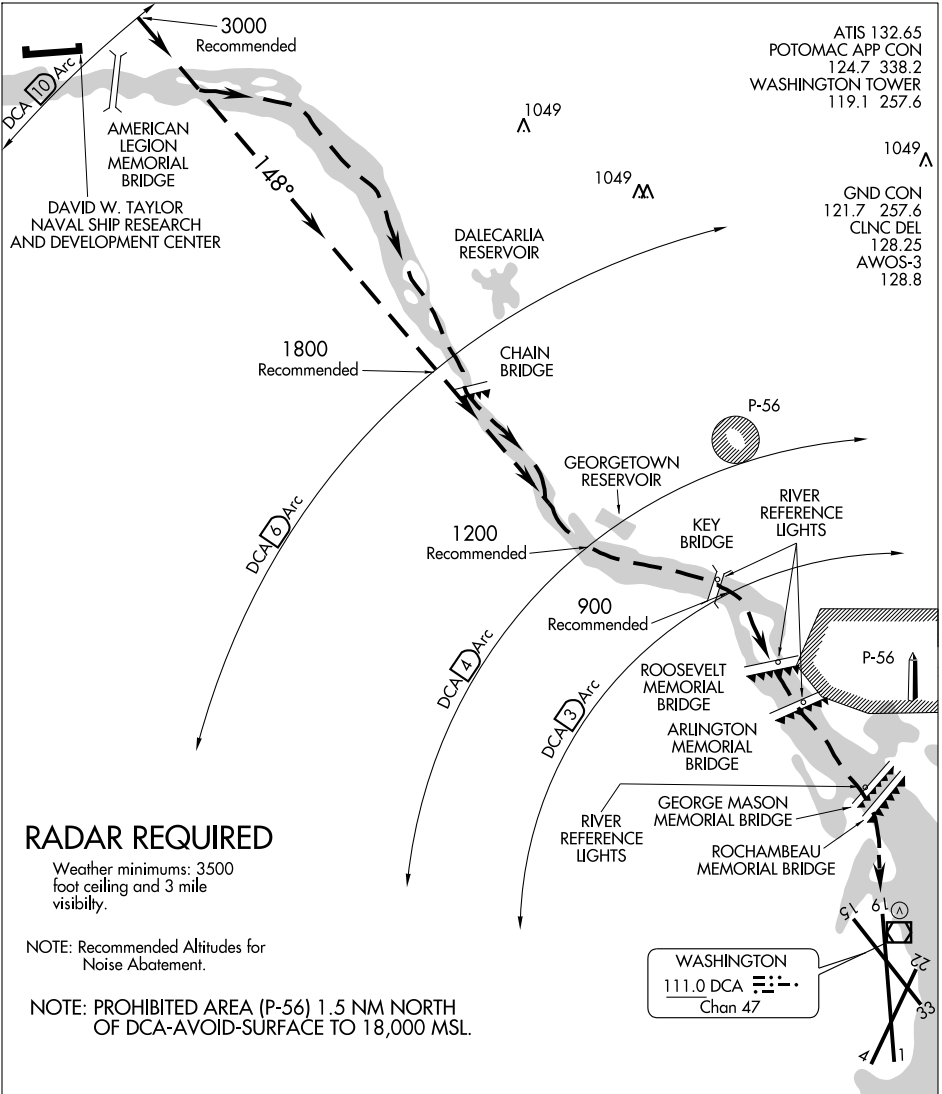


# RIVER VISUAL RWY 19

WASHINGTON/ RONALD REAGAN WASHINGTON NATIONAL (DCA)  
AL-443 (FAA) WASHINGTON, DC

ATIS 132.65  
POTOMAC APP CON 124.7 338.2  
WASHINGTON TOWER 119.1 257.6

1049 A  
1049 M  
1049 A  
GND CON 121.7 257.6  
CLNC DEL 128.25  
AWOS-3 128.8



NE-3, 01 JUL 2010 to 29 JUL 2010

NE-3, 01 JUL 2010 to 29 JUL 2010

## RADAR REQUIRED

Weather minimums: 3500 foot ceiling and 3 mile visibility.

NOTE: Recommended Altitudes for Noise Abatement.

NOTE: PROHIBITED AREA (P-56) 1.5 NM NORTH OF DCA-AVOID-SURFACE TO 18,000 MSL.

1 NM	2	3	4	5	6	7
------	---	---	---	---	---	---

## RIVER VISUAL RWY 19

Aircraft may visually follow the river to the airport, or may proceed via the DCA VOR/DME R-328 (148° inbound) or via the Rosslyn LDA Rwy 19 Approach to abeam Georgetown Reservoir or the DCA 4 NM DME fix, then follow the river to the airport.

NOTE: Clearance for visual approach does not authorize penetration of P-56.

# RIVER VISUAL RWY 19

38°51'N-77°02'W

WASHINGTON, DC