

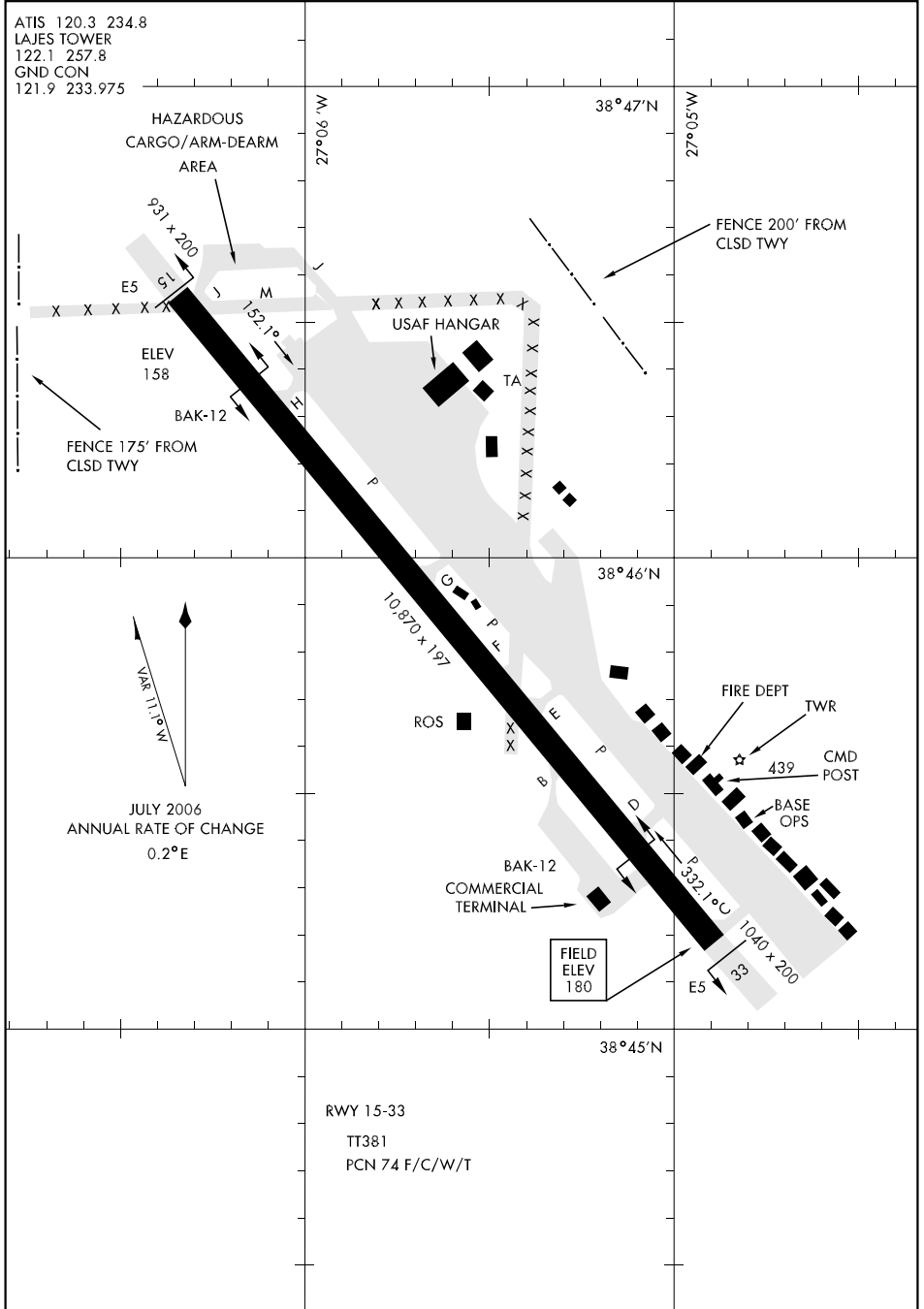
AIRPORT DIAGRAM

AFD-1433 [USAF]

LAJES (LPLA)

LAJES, TERCIERA I., AZORES

ATIS 120.3 234.8
 LAJES TOWER
 122.1 257.8
 GND CON
 121.9 233.975



VAR 11.1°N
 JULY 2006
 ANNUAL RATE OF CHANGE
 0.2°E

RWY 15-33
 TT381
 PCN 74 F/C/W/T

AIRPORT DIAGRAM

LAJES, TERCIERA I., AZORES

LAJES (LPLA)

Effective 31 AUG 2006 - 28 SEP 2006