

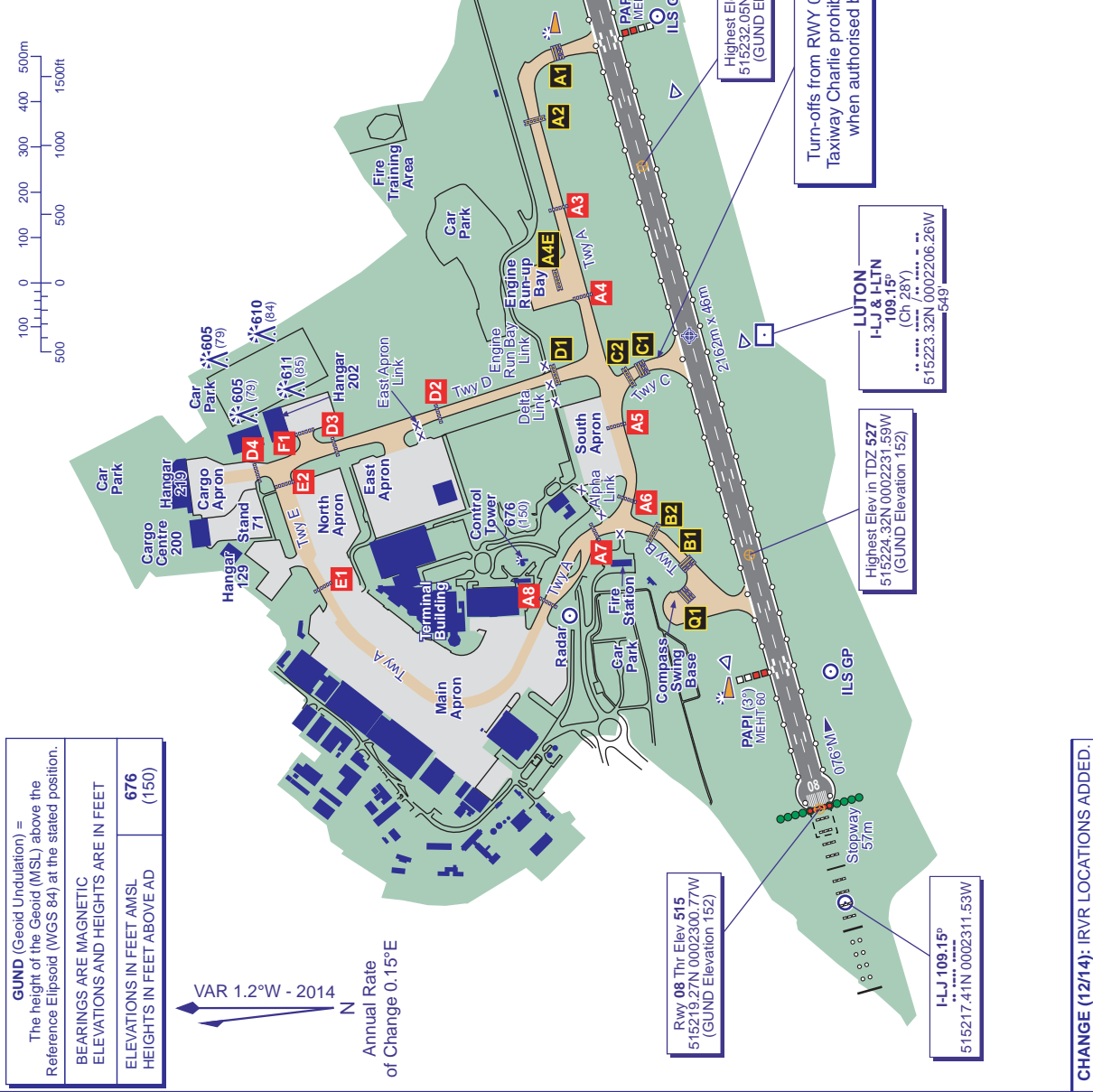
**LONDON LUTON
EGGW**

AD ELEV 526FT

ARP 515229N 0002206W

**AERODROME
CHART - ICAO**

| COM | DESCRIPTION | LUTON INFO |
|------------|--|----------------|
| ATIS | 120.575 | LUTON TOWER |
| TWR | 132.550 | LUTON GROUND |
| | 121.750 (GMC) | LUTON DELIVERY |
| | 121.885 | LUTON FIRE |
| | 121.600 | |
| LIGHTING | | |
| APCH 08 | 427m. HI coded C/L with 3 crossbars. | |
| APCH 26 | 844m. HI coded C/L with 5 crossbars. | |
| APCH 08/26 | Supplementary lighting inner 240m. | |
| THR 08/26 | Flush uni-d green with elev green W bars. | |
| RWY 08/26 | Elev HI bi-d with LI omni-d component. HI colour coded C/L. TDZ 900m. End lights red. Blue turning circle lights. | |
| TWY | colour coded C/L. Blue edge in run-up area. Switched red runway stop bars. Green/Yellow lead on/off C/L at A1, B1, C1. | |



AERO INFO DATE 26 AUG 14

| RUNWAY/TAXIWAY/APRON PHYSICAL CHARACTERISTICS | | |
|---|------------------|------------------|
| APRON / RWY / TWY | SURFACE | BEARING STRENGTH |
| RWY 08/26 | Grooved Asphalt | 75/R/D/X/T |
| East Apron | Concrete/Asphalt | - |
| South Apron | Concrete/Asphalt | - |
| Cargo Apron | Concrete/Asphalt | - |
| Taxiways A, B, C, D | Asphalt | - |
| Taxiway E | Concrete | - |

CHANGE (12/14): IRVR LOCATIONS ADDED.